

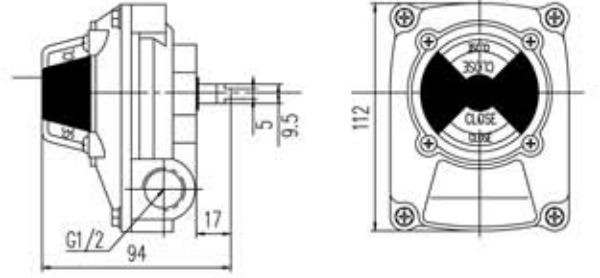
# SWITCH BOX

## SWITCH BOX



### Technical Specifications,

- \* 3D continuous visual position indicator
- \* Easy adjustable spring forced CAM system
- \* Standard IP67 enclosure
- \* 2 pcs Open/Close mechanical or proximity switches
- \* Easy adjustable brackets and suitable for all NAMUR VDI/VDE interface actuators
- \* 8 strips on terminal box allows direct connection of solenoid valve inside the switch box.



### Optional,

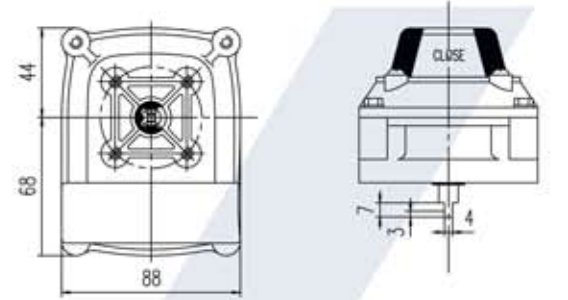
- \* Eex d II B T6 Explosion Proof Type

### Material List

Part Name	Material
Body	Powder Epoxy Coated Alu Die Cast
Indicator	Transparent Plastic
Bolt	AISI316 St. Steel
Stem	AISI316 St. Steel
Seal	EPDM

### Type of Limit Switch Boxes

Model	Description
A250 PSM	IP67, O/C 3D Indicator, Open/Close Mechanical Sw. Box
A250 PSP	IP67, O/C 3D Indicator, Open/Close Proximity Sw. Box
A250 PSXM	IP67, O/C 3D Indicator, Open/Close Exp. Proof Mechanical Sw. Box
A250 PSXP	IP67, O/C 3D Indicator, Open/Close Exp. Proof Proximity Sw. Box



### Technical Specifications

Item Code	Protectin Class	Working Temperature	Cable Gland	Terminal	Indicator	Switch Type
A250 PSM	IP67	-20 °C ~ + 80 °C	2 x M20 / PG13.5	8 Strips	3 D 0 ~ 90° Open-Close	Mechanical
A250 PSP	IP67	-20 °C ~ + 80 °C	2 x G1/2 / M20	8 Strips	3 D 0 ~ 90° Open-Close	Proximity

### Bracket Dimensions

Model	Bracket Type	Mounting Dimensions
MB-1		30x80 H:20
MB-2		30x80 - 30x130 H:20-30 Adjustable
MB-3		30x80 - 30x130 H:50 Adjustable

