

OUTPUT DRIVES
According to ISO 5210/ DIN 3338

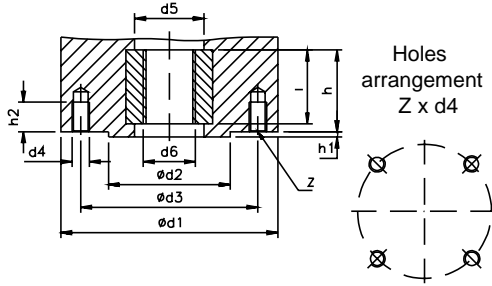
510 SERIES

Output drives

Multiturn Gearboxes - Max. Torques (Nm)

Dimensions mm. **120** **250** **500** **1000** **2000**

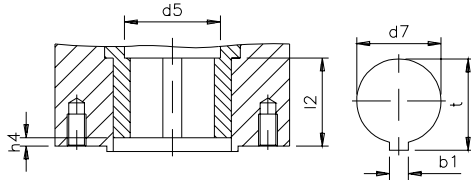
Type A



ISO 5210	F10	F14	F14	F16	F25
F.Máx.(kN)	70	160	160	250	380
d1	125	175	175	210	300
d2f8	70	100	100	130	200
d3	102	140	140	165	254
d4	M10	M16	M16	M20	M16
d5	43,5	60	60	79	92
d6 máx.	40	57	57	75	86
l	40	60	60	71	91
h	40	74	74	71	91
h1	3	4	4	4,5	4,5
h2	15	25	25	30	25
Z	4	4	4	4	8

Stem nut

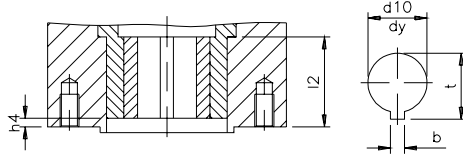
Type B1, B2



b1Js9	12	18	18	22	28
d5	42	50	50	70	90
d7H9	42	60	60	80	100
d7 mín.	30	45	45	60	75
t	45,3	64,4	64,4	85,4	106,4
l2	48	74	74	84,9	113,5
h4	0	0	0	2	2,5

Plug sleeve

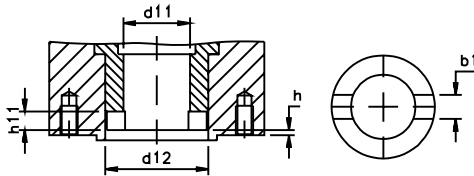
Type B3, B4



bJs9	6	8	8	12	14
d10H9	20	30	30	40	50
dy máx.	28	45	45	60	75
t	22,8	33,3	33,3	43,3	53,8
l2	48	74	74	84,9	113,5
h4	0	0	0	2	2,5

Bore with keyway

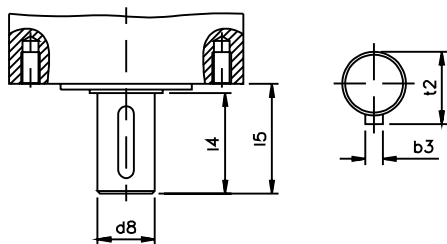
Type C



b1H11	14	20	20	24	30
d11H11	28	38	38	47	64
d11 mín.	20	30	30	40	50
d11 máx.	42	60	60	80	100
d12	55	90	90	100	125
h11	6,5	8	8	10	11
h	0	0	0	2	2,5

Dog coupling

Type D



b3h9	6	8	8	12	-
l4	50	70	70	90	-
l5	55	76	76	97	-
d8g6	20	30	30	40	-
t2	22,5	33	33	43	-

Shaft coupling

Subject to change without notice. Previous data sheets invalid with the issue of the latest data sheets.

VALVE
CONTROL



Nº :

E1510A040

Issued:

12.98