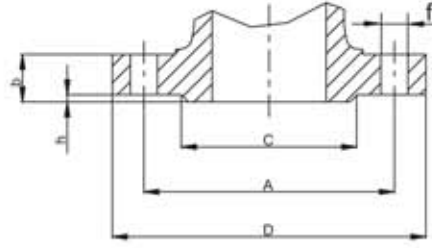


# DIN FLANGES DIMENSIONS

## DIN STANDARTI FLANŞ ÇAPLARI



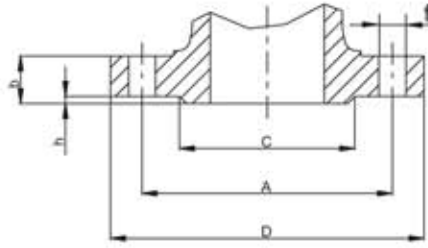
DN = Nominal pipe size  
D = Outside diameter of flange  
b = Thickness of flange min.  
C = Diameter of hub  
h = Height of raised face  
N = Number of bolt holes  
f = Diameter of bolt holes  
A = Diameter of bolt circle

| PN     | DN | D   | b  | C   | h | N° | f    | A   | PN    | DN  | D   | b   | C   | h | N° | f  | A   |
|--------|----|-----|----|-----|---|----|------|-----|-------|-----|-----|-----|-----|---|----|----|-----|
| 6      | 10 | 75  | 12 | 35  | 2 | 4  | 11   | 50  | 6     | 100 | 210 | 16  | 148 | 3 | 4  | 18 | 170 |
| 10-16  | 10 | 90  | 14 | 40  | 2 | 4  | 14   | 60  | 10-16 | 100 | 220 | 20  | 158 | 3 | 8  | 18 | 180 |
| 25-40  | 10 | 90  | 16 | 40  | 2 | 4  | 14   | 60  | 25-40 | 100 | 235 | 24  | 162 | 3 | 8  | 22 | 190 |
| 64-100 | 10 | 100 | 20 | 40  | 2 | 4  | 14   | 70  | 64    | 100 | 250 | 30  | 162 | 3 | 8  | 26 | 200 |
| 160    | 10 | 100 | 20 | 40  | 2 | 4  | 15   | 70  | 160   | 100 | 265 | 40  | 162 | 3 | 8  | 30 | 210 |
| 250    | 10 | 125 | 24 | 40  | 2 | 4  | 18   | 85  | 250   | 100 | 300 | 54  | 162 | 3 | 8  | 34 | 235 |
| 6      | 15 | 80  | 12 | 40  | 2 | 4  | 11   | 55  | 100   | 125 | 265 | 36  | 162 | 3 | 8  | 30 | 210 |
| 10-16  | 15 | 95  | 14 | 45  | 2 | 4  | 14   | 65  | 6     | 125 | 240 | 18  | 178 | 3 | 8  | 18 | 200 |
| 25-40  | 15 | 95  | 16 | 45  | 2 | 4  | 14   | 65  | 10-16 | 125 | 250 | 22  | 188 | 3 | 8  | 18 | 210 |
| 64-100 | 15 | 105 | 20 | 45  | 2 | 4  | 14   | 75  | 25-40 | 125 | 270 | 26  | 188 | 3 | 8  | 26 | 220 |
| 160    | 15 | 105 | 20 | 45  | 2 | 4  | 15   | 75  | 64    | 125 | 295 | 34  | 188 | 3 | 8  | 30 | 240 |
| 250    | 15 | 130 | 26 | 45  | 2 | 4  | 18,5 | 90  | 100   | 125 | 315 | 40  | 188 | 3 | 8  | 33 | 250 |
| 6      | 20 | 90  | 14 | 50  | 2 | 4  | 11   | 65  | 160   | 125 | 315 | 44  | 188 | 3 | 8  | 33 | 250 |
| 10-16  | 20 | 105 | 16 | 58  | 2 | 4  | 14   | 75  | 250   | 125 | 340 | 60  | 188 | 3 | 12 | 41 | 275 |
| 25-40  | 20 | 105 | 18 | 58  | 2 | 4  | 14   | 75  | 6     | 150 | 265 | 18  | 202 | 3 | 8  | 18 | 225 |
| 64-100 | 20 | 130 | 24 | 58  | 2 | 4  | 18   | 90  | 10-16 | 150 | 285 | 22  | 212 | 3 | 8  | 22 | 240 |
| 6      | 25 | 100 | 14 | 60  | 2 | 4  | 11   | 75  | 25-40 | 150 | 300 | 28  | 218 | 3 | 8  | 26 | 250 |
| 10-16  | 25 | 115 | 16 | 68  | 2 | 4  | 14   | 85  | 64    | 150 | 345 | 36  | 218 | 3 | 8  | 33 | 280 |
| 25-40  | 25 | 115 | 18 | 68  | 2 | 4  | 14   | 85  | 100   | 150 | 355 | 44  | 218 | 3 | 12 | 33 | 290 |
| 64-100 | 25 | 140 | 24 | 68  | 2 | 4  | 18   | 100 | 160   | 150 | 355 | 50  | 218 | 3 | 12 | 33 | 290 |
| 160    | 25 | 140 | 24 | 68  | 2 | 4  | 18   | 100 | 250   | 150 | 390 | 68  | 218 | 3 | 12 | 48 | 320 |
| 250    | 25 | 150 | 28 | 68  | 2 | 4  | 19   | 105 | 6     | 175 | 295 | 20  | 232 | 3 | 8  | 18 | 255 |
| 6      | 32 | 120 | 14 | 70  | 2 | 4  | 14   | 90  | 10-16 | 175 | 315 | 24  | 242 | 3 | 8  | 22 | 270 |
| 10-16  | 32 | 140 | 16 | 78  | 2 | 4  | 18   | 100 | 25    | 175 | 330 | 28  | 248 | 3 | 12 | 26 | 280 |
| 25-40  | 32 | 140 | 18 | 78  | 2 | 4  | 18   | 100 | 40    | 175 | 350 | 32  | 260 | 3 | 12 | 30 | 295 |
| 64-100 | 32 | 155 | 24 | 78  | 2 | 4  | 22   | 110 | 64    | 175 | 375 | 40  | 260 | 3 | 12 | 33 | 310 |
| 6      | 40 | 130 | 14 | 80  | 3 | 4  | 14   | 100 | 100   | 175 | 385 | 48  | 260 | 3 | 12 | 33 | 320 |
| 10-16  | 40 | 150 | 16 | 88  | 3 | 4  | 18   | 110 | 160   | 175 | 390 | 54  | 260 | 3 | 12 | 36 | 320 |
| 25-40  | 40 | 150 | 18 | 88  | 3 | 4  | 18   | 110 | 250   | 175 | 430 | 74  | 260 | 3 | 12 | 50 | 355 |
| 64-100 | 40 | 170 | 26 | 85  | 3 | 4  | 22   | 125 | 6     | 200 | 320 | 20  | 258 | 3 | 8  | 18 | 280 |
| 160    | 40 | 170 | 28 | 88  | 3 | 4  | 22   | 125 | 10    | 200 | 340 | 24  | 268 | 3 | 8  | 22 | 295 |
| 250    | 40 | 185 | 34 | 88  | 3 | 4  | 25   | 135 | 16    | 200 | 340 | 24  | 268 | 3 | 12 | 22 | 295 |
| 6      | 50 | 140 | 14 | 90  | 3 | 4  | 14   | 110 | 25    | 200 | 360 | 30  | 278 | 3 | 12 | 26 | 310 |
| 10-16  | 50 | 165 | 18 | 102 | 3 | 4  | 18   | 125 | 40    | 200 | 375 | 34  | 285 | 3 | 12 | 30 | 320 |
| 25-40  | 50 | 165 | 20 | 102 | 3 | 4  | 18   | 125 | 64    | 200 | 415 | 42  | 285 | 3 | 12 | 36 | 345 |
| 64     | 50 | 180 | 26 | 102 | 3 | 4  | 22   | 135 | 100   | 200 | 430 | 52  | 285 | 3 | 12 | 36 | 360 |
| 100    | 50 | 195 | 28 | 102 | 3 | 4  | 26   | 145 | 160   | 200 | 430 | 60  | 285 | 3 | 12 | 36 | 360 |
| 160    | 50 | 195 | 30 | 102 | 3 | 4  | 26   | 145 | 250   | 200 | 485 | 82  | 285 | 3 | 12 | 57 | 400 |
| 250    | 50 | 200 | 38 | 102 | 3 | 5  | 26   | 150 | 6     | 250 | 375 | 22  | 312 | 3 | 12 | 18 | 335 |
| 6      | 65 | 160 | 14 | 110 | 3 | 4  | 14   | 130 | 10    | 250 | 395 | 26  | 320 | 3 | 12 | 22 | 350 |
| 10-16  | 65 | 185 | 18 | 122 | 3 | 4  | 18   | 145 | 16    | 250 | 405 | 26  | 320 | 3 | 12 | 26 | 355 |
| 25-40  | 65 | 185 | 22 | 122 | 3 | 8  | 18   | 145 | 25    | 250 | 425 | 32  | 335 | 3 | 12 | 30 | 370 |
| 64     | 65 | 205 | 26 | 120 | 3 | 8  | 22   | 160 | 40    | 250 | 450 | 38  | 345 | 3 | 12 | 33 | 385 |
| 100    | 65 | 220 | 30 | 120 | 3 | 8  | 26   | 170 | 64    | 250 | 470 | 46  | 345 | 3 | 12 | 36 | 400 |
| 160    | 65 | 220 | 34 | 122 | 3 | 8  | 26   | 180 | 100   | 250 | 505 | 60  | 345 | 3 | 12 | 39 | 430 |
| 250    | 65 | 230 | 42 | 122 | 3 | 8  | 30   | 180 | 160   | 250 | 515 | 68  | 345 | 3 | 12 | 42 | 430 |
| 6      | 80 | 190 | 16 | 128 | 3 | 4  | 18   | 150 | 250   | 250 | 585 | 100 | 345 | 3 | 16 | 72 | 490 |
| 10     | 80 | 200 | 20 | 138 | 3 | 8  | 18   | 160 | 6     | 300 | 440 | 22  | 365 | 4 | 12 | 22 | 395 |
| 16     | 80 | 200 | 20 | 138 | 3 | 8  | 18   | 160 | 10    | 300 | 445 | 26  | 370 | 4 | 12 | 22 | 400 |
| 25-40  | 80 | 200 | 24 | 138 | 3 | 8  | 18   | 160 | 16    | 300 | 460 | 28  | 378 | 4 | 12 | 26 | 410 |
| 64     | 80 | 215 | 28 | 138 | 3 | 8  | 22   | 170 | 25    | 300 | 485 | 34  | 390 | 4 | 16 | 30 | 430 |
| 100    | 80 | 230 | 32 | 138 | 3 | 8  | 24   | 180 | 40    | 300 | 515 | 42  | 410 | 4 | 16 | 33 | 450 |
| 160    | 80 | 230 | 36 | 138 | 3 | 8  | 40   | 180 | 64    | 300 | 530 | 52  | 410 | 4 | 16 | 36 | 460 |
| 250    | 80 | 255 | 46 | 138 | 3 | 8  | 31   | 200 | 100   | 300 | 585 | 68  | 410 | 4 | 16 | 42 | 500 |
|        |    |     |    |     |   |    |      |     | 160   | 300 | 585 | 78  | 410 | 4 | 16 | 42 | 500 |
|        |    |     |    |     |   |    |      |     | 250   | 300 | 690 | 120 | 410 | 4 | 16 | 90 | 590 |



# DIN FLANGES DIMENSIONS

## DIN STANDARTI FLANŞ ÇAPLARI



DN = Nominal pipe size  
 D = Outside diameter of flange  
 b = Thickness of flange min.  
 C = Diameter of hub  
 h = Height of raised face  
 N = Number of bolt holes  
 f = Diameter of bolt holes  
 A = Diameter of bolt circle

| PN  | DN  | D   | b   | C   | h | N° | f  | A   | PN  | DN   | D    | b   | C    | h   | N°  | f   | A    |
|-----|-----|-----|-----|-----|---|----|----|-----|-----|------|------|-----|------|-----|-----|-----|------|
| 6   | 350 | 490 | 22  | 415 | 4 | 12 | 22 | 445 | 6   | 700  | 860  | 24  | 775  | 5   | 24  | 25  | 810  |
| 10  | 350 | 505 | 26  | 430 | 4 | 16 | 22 | 460 | 10  | 700  | 895  | 30  | 800  | 5   | 24  | 30  | 840  |
| 16  | 350 | 520 | 30  | 438 | 4 | 16 | 26 | 470 | 16  | 700  | 910  | 42  | 795  | 5   | 24  | 36  | 840  |
| 25  | 350 | 555 | 38  | 450 | 4 | 16 | 33 | 490 | 25  | 700  | 960  | 50  | 820  | 5   | 24  | 42  | 875  |
| 40  | 350 | 580 | 46  | 465 | 4 | 16 | 36 | 510 | 40  | 700  | 995  | 64  | 840  | 5   | 24  | 48  | 900  |
| 64  | 350 | 600 | 56  | 465 | 4 | 16 | 39 | 525 | 64  | 700  | 1045 | 84  | 840  | 5   | 24  | 56  | 935  |
| 100 | 350 | 655 | 74  | 465 | 4 | 16 | 48 | 560 | 100 | 700  | 1145 | 120 | 840  | 5   | 24  | 70  | 1020 |
| 6   | 400 | 540 | 22  | 465 | 4 | 16 | 22 | 495 | 6   | 800  | 975  | 24  | 880  | 5   | 24  | 30  | 920  |
| 10  | 400 | 565 | 26  | 482 | 4 | 16 | 26 | 515 | 10  | 800  | 1015 | 32  | 905  | 5   | 24  | 33  | 950  |
| 16  | 400 | 580 | 32  | 490 | 4 | 16 | 30 | 525 | 16  | 800  | 1025 | 42  | 900  | 5   | 24  | 39  | 950  |
| 25  | 400 | 620 | 40  | 505 | 4 | 16 | 36 | 550 | 25  | 800  | 1085 | 64  | 930  | 5   | 24  | 48  | 990  |
| 40  | 400 | 660 | 50  | 535 | 4 | 16 | 39 | 585 | 40  | 800  | 1165 | 72  | 960  | 5   | 24  | 62  | 1050 |
| 64  | 400 | 670 | 60  | 535 | 4 | 16 | 42 | 585 | 64  | 800  | 1165 | 92  | 960  | 5   | 24  | 62  | 1050 |
| 100 | 400 | 715 | 78  | 535 | 4 | 16 | 48 | 620 | 100 | 800  | n.a  | n.a | n.a  | n.a | n.a | n.a | n.a  |
| 6   | 450 | 595 | 22  | 520 | 4 | 16 | 22 | 550 | 6   | 900  | 1075 | 26  | 980  | 5   | 24  | 30  | 1020 |
| 10  | 450 | 615 | 26  | 532 | 4 | 20 | 26 | 565 | 10  | 900  | 1115 | 34  | 1005 | 5   | 28  | 33  | 1050 |
| 16  | 450 | 640 | 32  | 550 | 4 | 20 | 30 | 585 | 16  | 900  | 1125 | 44  | 1000 | 5   | 28  | 39  | 1050 |
| 25  | 450 | 670 | 40  | 555 | 4 | 20 | 36 | 600 | 25  | 900  | 1185 | 68  | 1030 | 5   | 28  | 48  | 1090 |
| 40  | 450 | 685 | 50  | 560 | 4 | 20 | 39 | 610 | 40  | 900  | 1250 | 78  | 1070 | 5   | 28  | 56  | 1140 |
| 64  | 450 | 715 | 64  | 560 | 4 | 20 | 42 | 630 | 64  | 900  | 1285 | 98  | 1070 | 5   | 28  | 62  | 1170 |
| 100 | 450 | 770 | 86  | 560 | 4 | 20 | 48 | 675 | 100 | 900  | n.a  | n.a | n.a  | n.a | n.a | n.a | n.a  |
| 6   | 500 | 645 | 24  | 570 | 4 | 20 | 22 | 600 | 6   | 1000 | 1175 | 26  | 1080 | 5   | 28  | 30  | 1120 |
| 10  | 500 | 670 | 28  | 585 | 4 | 20 | 26 | 620 | 10  | 1000 | 1230 | 34  | 1110 | 5   | 28  | 36  | 1160 |
| 16  | 500 | 715 | 36  | 610 | 4 | 20 | 33 | 650 | 16  | 1000 | 1255 | 46  | 1115 | 5   | 28  | 42  | 1170 |
| 25  | 500 | 730 | 44  | 615 | 4 | 20 | 36 | 660 | 25  | 1000 | 1320 | 62  | 1140 | 5   | 28  | 56  | 1210 |
| 40  | 500 | 755 | 52  | 615 | 4 | 20 | 42 | 670 | 40  | 1000 | 1360 | 80  | 1180 | 5   | 28  | 56  | 1250 |
| 64  | 500 | 800 | 68  | 615 | 4 | 20 | 48 | 705 | 64  | 1000 | 1415 | 108 | 1180 | 5   | 28  | 70  | 1290 |
| 100 | 500 | 870 | 94  | 615 | 4 | 20 | 56 | 760 | 100 | 1000 | n.a  | n.a | n.a  | n.a | n.a | n.a | n.a  |
| 6   | 600 | 755 | 24  | 670 | 5 | 20 | 26 | 705 | 6   | 1200 | 1405 | 28  | 1295 | 5   | 32  | 33  | 1340 |
| 10  | 600 | 780 | 28  | 685 | 5 | 20 | 30 | 725 | 10  | 1200 | 1455 | 38  | 1330 | 5   | 32  | 39  | 1380 |
| 16  | 600 | 840 | 40  | 725 | 5 | 20 | 36 | 770 | 16  | 1200 | 1485 | 52  | 1330 | 5   | 32  | 48  | 1390 |
| 25  | 600 | 845 | 46  | 720 | 5 | 20 | 39 | 770 | 25  | 1200 | 1530 | 70  | 1350 | 5   | 32  | 56  | 1420 |
| 40  | 600 | 890 | 54  | 735 | 5 | 20 | 48 | 795 | 40  | 1200 | 1575 | 88  | 1380 | 5   | 32  | 62  | 1460 |
| 64  | 600 | 930 | 76  | 735 | 5 | 20 | 56 | 820 | 64  | 1200 | 1665 | 126 | 1380 | 5   | 32  | 78  | 1530 |
| 100 | 600 | 990 | 104 | 735 | 5 | 20 | 62 | 875 | 100 | 1200 | n.a  | n.a | n.a  | n.a | n.a | n.a | n.a  |

### FLANGES - TYPES OF CONTACT SURFACES - DIN 2526



Type A - Contact face without stipulation

Type B - Contact face  $R_z = 160$ , turned (not finer than 40 micron)

Type C - Raised face  $R_z = 160$  (not finer than 40 micron), turned

Type D - Raised face  $R_z = 40$ , turned

Type E - Raised face  $R_z = 16$ , turned

#### NOMINAL ROUGHNESS GRADES ( $R_z$ )

| $R_a$ ( $\mu m$ ) | $R_z$ ( $\mu m$ ) |
|-------------------|-------------------|
| 1.6               | 16                |
| 3.2               | 25                |
| 6.3               | 40                |
| 12.5              | 100               |
| 25                | 160               |

